



growing

Fall in Love with Fresno 2022

FAQs

What should I wear?

Garden Casual (Outdoor dressy casual attire!)

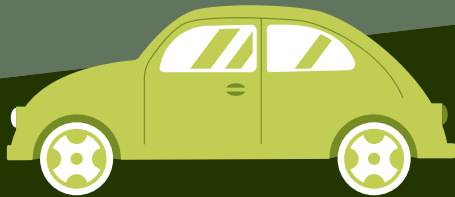


What are we eating?

- Chicken quarters with rice and beans **OR**
- Ensalada de nopal (cactus salad) with rice and beans
- When you check-in, you will receive your meal ticket and take it to your table. Dinner will be prepared by local community members
- Ampersand ice cream after program!

Special parking details?

Limited parking will be available at Arte Américas. If all spaces are full, you can access free parking across the street in the large lot at Van Ness/Calaveras. You do not have to pay the meters after 6pm, so parking on the street will be free.



What is the schedule of events?


6:00 pm: Check in, silent auction and raffle items, chips and salsa, agua frescas (delicious drinks), games

6:30 pm: Program begins with inspiring stories and sharing of the growing work of ENP

8:00 pm: Program ends. After the program, stick around for dessert, games, and the raffling of items.



How can I donate at the event?



Text GIVE to 833-413-0234. Checks and Cash are also accepted - there will be raffle and game tickets available for purchase if you would like to bring cash for those items



Can I give my ticket to someone else if I can't attend?

Yes! Email gabrielle@everyneighborhood.org with the first and last name of the guest who will be attending instead of you.

